

Office Space Available

2545 Taylor Road ~ Montgomery ~ AL ~ 36117



Property Highlights

- The property is comprised of 63,200 gross SF with approximately 60,525 SF of rentable office space and consists of three levels:
 - 22,859 SF First Level
 - 22,579 SF Second Level
 - 15,087 SF Lower Level
- The property is situated on ten well manicured acres, the perimeter is completely fenced and an electronic gate controls access at property's main drive entrance at Taylor Road.
- Amenities include 180 parking spaces, large courtyard area and outside receiving bay. Office furnishings available.
- 2545 Taylor Rd is located within the East Montgomery submarket.

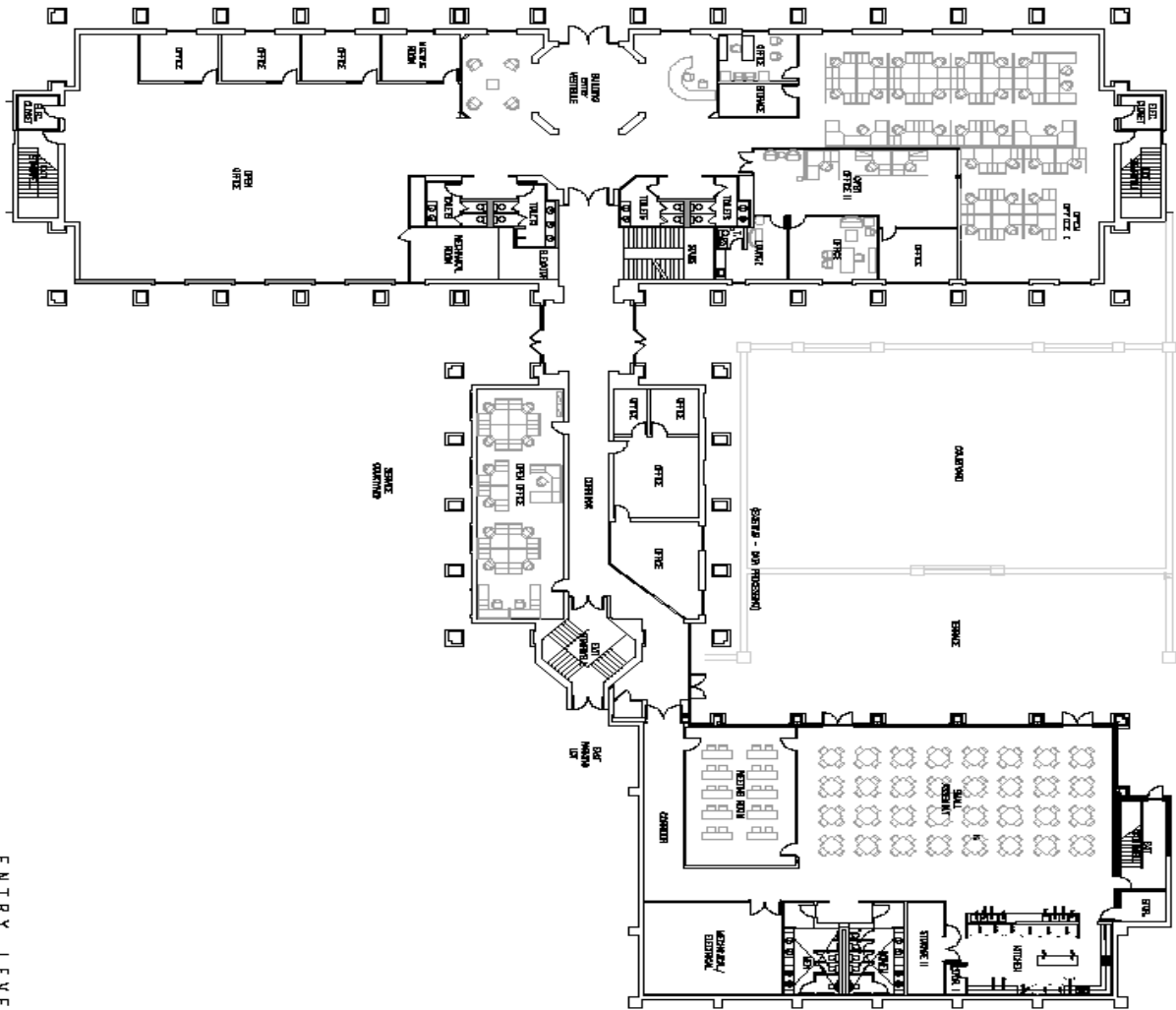


THOMAS CREWS
334-272-1001~FAX: 334-386-0408
EMAIL: tcrews@commprop.biz
www.commercialpropertiesinc.biz

**Commercial
Properties, Inc.**

Office Space Available

2545 Taylor Road ~ Montgomery ~ AL ~ 36117

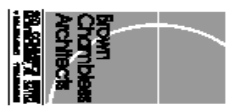


ENTRY LEVEL FLOOR PLAN
SCALE: 1/8"=1'-0"

PROJECT NUMBER: 2008
 DATE: 12/18/2008
 PROJECT: SOUTHERN CLUBBING BUILDING
 ARCHITECT: BROWN CHAMBERS ARCHITECTS
 PROJECT NUMBER: A0110

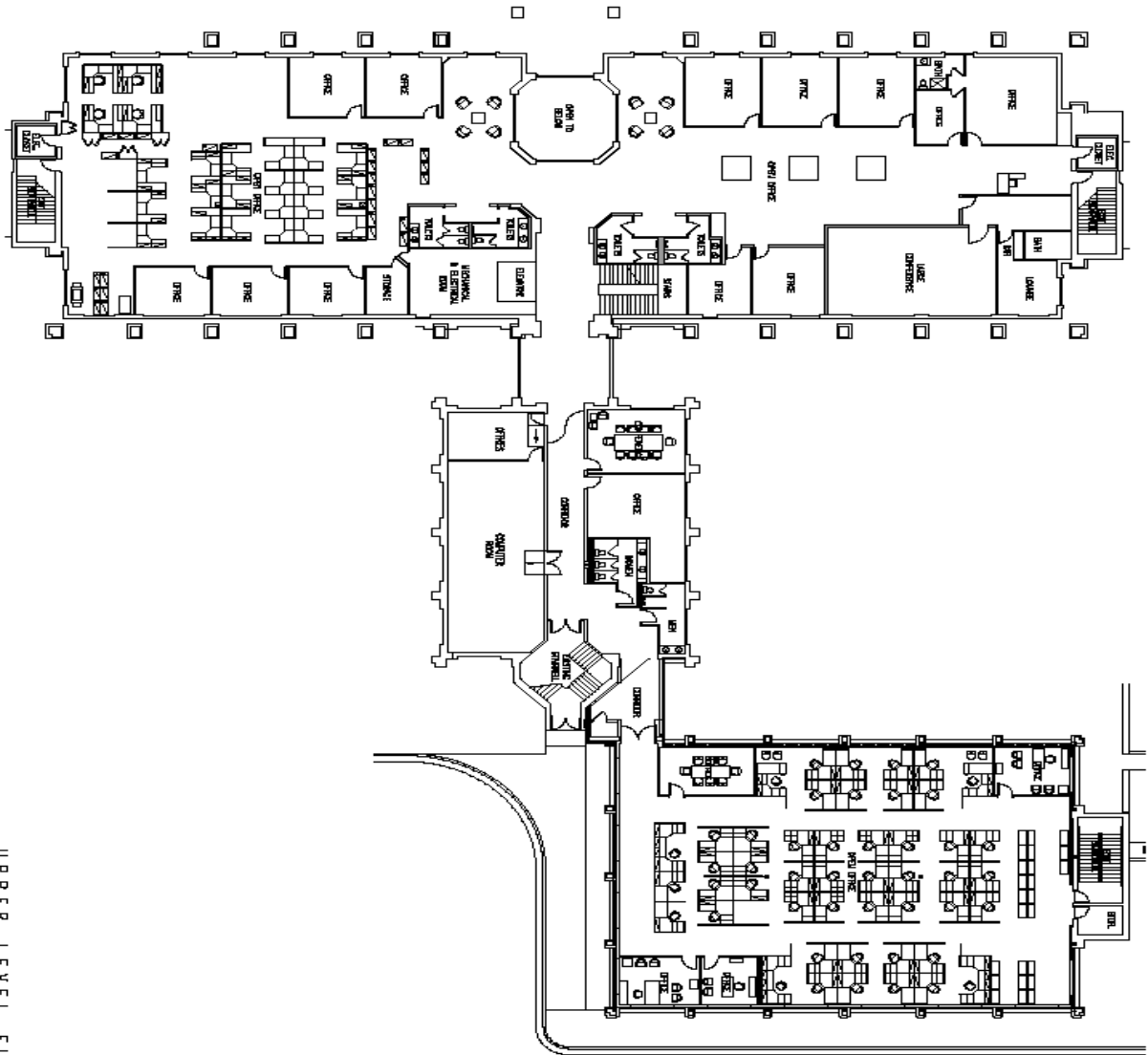
SOUTHERN CLUBBING BUILDING
 Montgomery, Alabama
 PROJECT TITLE:
ENTRY LEVEL FLOOR PLAN

Prepared by: B.A. -
 Checked by: J.C. -
 Date: 12/18/2008
 Scale: 1/8"=1'-0"

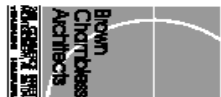


Office Space Available

2545 Taylor Road ~ Montgomery ~ AL ~ 36117



UPPER LEVEL FLOOR PLAN
SCALE 3/8"=1'-0"



**Brown
Chorobless
Architects**
1000 W. WALKER BLVD.
MONTGOMERY, AL 36102

Project No. 13 -
By Date of Submittal
Approved by Architect
Date
Scale
Author
Date
Checked
Date
Reviewed
Date
Approved
Date

**PROJECT
NAME**

**UPPER LEVEL
FLOOR PLAN**



**NOT FOR
CONSTRUCTION
(PRELIMINARY)**

**SHRIMP ROSS
A0120**